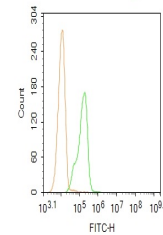


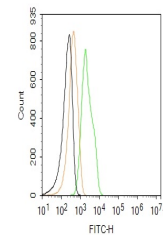
Product Datasheet

Nurr1 antibody (FITC) (orb464231)

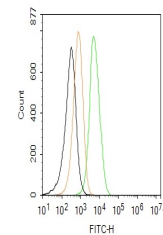
Description	Nurr1 antibody (FITC)
Species/Host	Rabbit
Reactivity	Human, Rat
Conjugation	FITC
Tested Applications	FC, IF
Immunogen	KLH conjugated synthetic peptide derived from human Nurr1
Target	Nurr1
Preservatives	0.01M TBS(pH7.4) with 1% rAlbumin, 0.03% Proclin300 and 50% Glycerol.
Form/Appearance	Liquid
Concentration	1mg/ml
Storage	Shipped at 4°C. Store at -20 °C for one year. Avoid repeated freeze/thaw cycles.
Note	For research use only
Isotype	IgG
Clonality	Polyclonal
Uniprot ID	P43354
Dilution Range	Flow-Cyt=1µg/Test,IF=1:100-500
Expiration Date	12 months from date of receipt.



Blank control: HeLa.
Primary Antibody (g...)



Blank control: HepG2.
Primary Antibody (...)



Blank control:U-87MG.
Primary Antibody (...)