
Product Datasheet

ASGR1 antibody (orb4635)

Description

ASGR1 antibody

Species/Host

Rabbit

Reactivity

Bovine, Equine, Human, Mouse, Porcine, Rat

Conjugation

Unconjugated

Tested Applications

ELISA, IHC-P, WB

Immunogen

KLH conjugated synthetic peptide derived from human ASGR1. Please contact us for the exact immunogen sequence. The peptide is available as orb374774.

Target

ASGR1

Form/Appearance

10 mM PBS, 0.02% sodium azide

Concentration

- 100 µg (in 200 µl): 0.5 mg/ml- 200 µg (in 400 µl): 0.5 mg/ml

Storage

Store at 4°C for up to two weeks. For long term storage, aliquot and store at -20°C, avoid freeze/thaw cycles.

Note

For research use only

Isotype

IgG

Clonality

Polyclonal

Purity

Polyclonal antibodies are purified by peptide affinity chromatography

MW

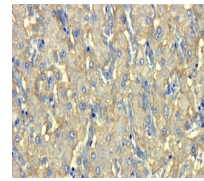
32 kDa

Uniprot ID
[P34927](#), [P07306](#), [P02706](#)
NCBI
[11](#), [21](#), [001197216](#), [001184145](#)
Entrez
[432](#)
Dilution Range

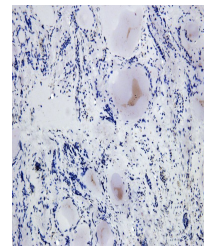
WB:1:200, IHC-P:1:100

Expiration Date

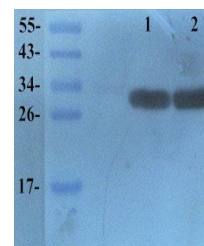
12 months from date of receipt.



IHC-P staining of mouse lymph gland tiss...



Immunohistochemical staining of paraffin...



WB analysis of mouse liver (Lane 1), rat...