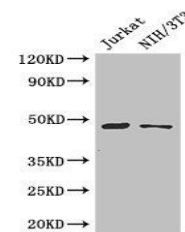


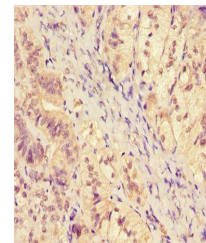
Product Datasheet

SGK1 antibody (orb46079)

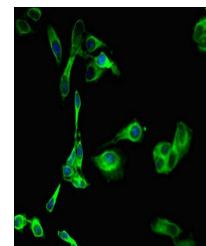
Description	SGK1 antibody
Species/Host	Rabbit
Reactivity	Human, Mouse
Conjugation	Unconjugated
Tested Applications	ELISA, IF, IHC, WB
Immunogen	Recombinant Human Serine/threonine-protein kinase Sgk1 protein (247-406AA)
Target	SGK1
Preservatives	Preservative: 0.03% Proclin 300. Constituents: 50% Glycerol
Form/Appearance	Liquid
Storage	Upon receipt, store at -20°C or -80°C. Avoid repeated freeze.
Note	For research use only
Isotype	IgG
Clonality	Polyclonal
Uniprot ID	O00141
Dilution Range	WB:1:500-5000, IHC-P:1:100-500, IF:1:50-500
Expiration Date	12 months from date of receipt.



Western blot analysis of Jurkat(lane 1),...



Immunohistochemical staining of human ad...



Immunofluorescence analysis of HeLa cell...