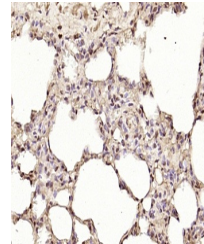


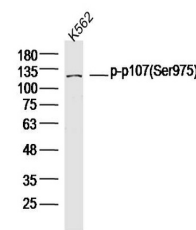
Product Datasheet

RBL1 (phospho-Ser975) antibody (orb4607)

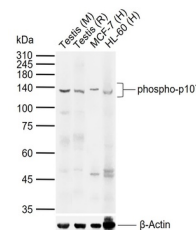
| | |
|----------------------------|---|
| Description | RBL1 (phospho-Ser975) antibody |
| Species/Host | Rabbit |
| Reactivity | Human, Mouse, Rat |
| Conjugation | Unconjugated |
| Tested Applications | IHC-P, WB |
| Immunogen | KLH conjugated Synthesised phosphopeptide derived from human RBL1 around the phosphorylation site of Ser975 (PG(P-S)PR) |
| Target | phospho-p107 (Ser975) |
| Preservatives | 0.01M TBS(pH7.4) with 1% rAlbumin, 0.03% Proclin300 and 50% Glycerol. |
| Form/Appearance | Liquid |
| Concentration | 1mg/ml |
| Storage | Shipped at 4°C. Store at -20°C for one year. Avoid repeated freeze/thaw cycles. |
| Note | For research use only |
| Isotype | IgG |
| Clonality | Polyclonal |
| MW | 121 kDa |
| Uniprot ID | P28749 |
| Dilution Range | WB=1:200-1000, IHC-P=1:100-500 |
| Expiration Date | 12 months from date of receipt. |



IHC-P analysis of rat lung using phospho...



Western blot:K562 Cell(Human);Primary:An...



Western blot:Lane 1:Mouse Testis;Lane 2:...