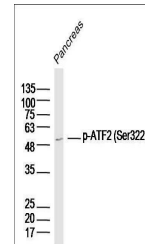


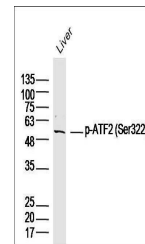
Product Datasheet

ATF2 (phospho-Ser322) antibody (orb4589)

Description	ATF2 (phospho-Ser322) antibody
Species/Host	Rabbit
Reactivity	Mouse, Rat
Conjugation	Unconjugated
Tested Applications	IHC-P
Immunogen	KLH conjugated Synthesised phosphopeptide derived from mouse ATF2 around the phosphorylation site of Ser322 (NT(p-S)GR)
Target	phospho-ATF2 (Ser322)
Preservatives	0.01M TBS(pH7.4) with 1% rAlbumin, 0.03% Proclin300 and 50% Glycerol.
Form/Appearance	Liquid
Concentration	1mg/ml
Storage	Shipped at 4°C. Store at -20 °C for one year. Avoid repeated freeze/thaw cycles.
Note	For research use only
Isotype	IgG
Clonality	Polyclonal
MW	55 kDa
Uniprot ID	P15336
Dilution Range	IHC-P=1:100-500, WB=1:500-2000, IHC-F=1:100-500, IF=1:100-500
Expiration Date	12 months from date of receipt.



Western blot analysis of Pancreas (Mouse...)



Western blot analysis of Liver (Mouse) L...