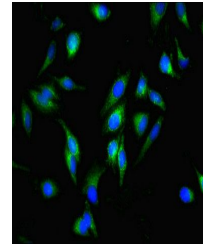


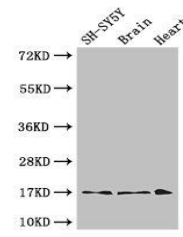
Product Datasheet

FIS1 antibody (orb45854)

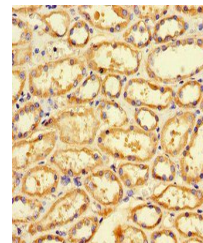
Description	FIS1 antibody
Species/Host	Rabbit
Reactivity	Human
Conjugation	Unconjugated
Tested Applications	ELISA, IF, IHC
Immunogen	Recombinant Human Mitochondrial fission 1 protein (1-122AA)
Target	FIS1
Preservatives	Preservative: 0.03% Proclin 300. Constituents: 50% Glycerol
Form/Appearance	Liquid
Storage	Maintain refrigerated at 2-8°C for up to 2 weeks. For long term storage store at -20°C in small aliquots to prevent freeze-thaw cycles.
Note	For research use only
Isotype	IgG
Clonality	Polyclonal
Uniprot ID	Q9Y3D6
Dilution Range	WB:1:1000-5000, IHC-P:1:500-1000, IF:1:50-500, IP:1:200-2000
Expiration Date	12 months from date of receipt.



Immunofluorescence analysis of HeLa cell...



Western blot analysis of SH-SY5Y(lane 1)...



Immunohistochemical staining of human ki...