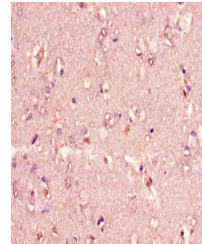


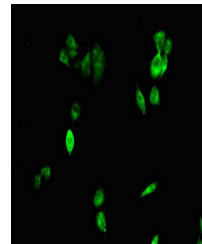
Product Datasheet

CIDEA antibody (orb45790)

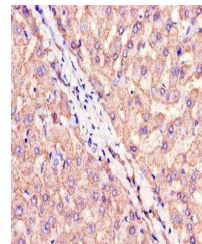
Description	CIDEA antibody
Species/Host	Rabbit
Reactivity	Human, Mouse
Conjugation	Unconjugated
Tested Applications	ELISA, IF, IHC, WB
Immunogen	Recombinant Human Cell death activator CIDE-A protein (1-51AA)
Target	CIDEA
Preservatives	Preservative: 0.03% Proclin 300. Constituents: 50% Glycerol
Form/Appearance	Liquid
Storage	Maintain refrigerated at 2-8°C for up to 2 weeks. For long term storage store at -20°C in small aliquots to prevent freeze-thaw cycles.
Note	For research use only
Isotype	IgG
Clonality	Polyclonal
Uniprot ID	O60543
Dilution Range	WB:1:1000-5000, IHC-P:1:20-200, IF:1:50-200
Expiration Date	12 months from date of receipt.



Immunohistochemical staining of human br...



Immunofluorescence analysis of HeLa cell...



Immunohistochemical staining of human li...