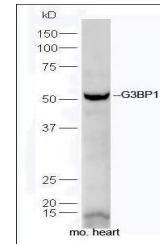


Product Datasheet

G3BP1 antibody (orb4575)

Description	G3BP1 antibody
Species/Host	Rabbit
Reactivity	Mouse
Conjugation	Unconjugated
Tested Applications	WB
Immunogen	KLH conjugated synthetic peptide derived from human G3BP1 (361-466/466 aa)
Target	G3BP1
Preservatives	0.01M TBS(pH7.4) with 1% rAlbumin, 0.03% Proclin300 and 50% Glycerol.
Form/Appearance	Liquid
Concentration	1mg/ml
Storage	Shipped at 4°C. Store at -20 °C for one year. Avoid repeated freeze/thaw cycles.
Note	For research use only
Isotype	IgG
Clonality	Polyclonal
MW	51 kDa
Uniprot ID	Q13283
Dilution Range	WB=1:500-2000
Expiration Date	12 months from date of receipt.



Western blot analysis of mouse heart Cel...