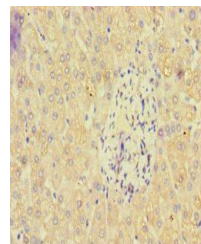


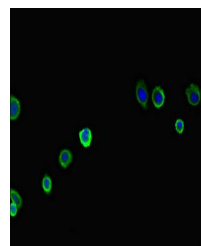
Product Datasheet

PAN2 antibody (orb45017)

| | |
|----------------------------|-----------------------------------------------------------------------------------------------------------------------------------------|
| Description | PAN2 antibody |
| Species/Host | Rabbit |
| Reactivity | Human |
| Conjugation | Unconjugated |
| Tested Applications | ELISA, IF, IHC |
| Immunogen | Recombinant Human PAB-dependent poly(A)-specific ribonuclease subunit PAN2 protein (628-908AA) |
| Target | PAN2 |
| Preservatives | Preservative: 0.03% Proclin 300. Constituents: 50% Glycerol |
| Form/Appearance | Liquid |
| Storage | Maintain refrigerated at 2-8°C for up to 2 weeks. For long term storage store at -20°C in small aliquots to prevent freeze-thaw cycles. |
| Note | For research use only |
| Isotype | IgG |
| Clonality | Polyclonal |
| Uniprot ID | Q504Q3 |
| Dilution Range | IHC-P:1:20-200, IF:1:50-200 |
| Expiration Date | 12 months from date of receipt. |



Immunohistochemical staining of human li...



Immunofluorescence analysis of HepG2 cel...