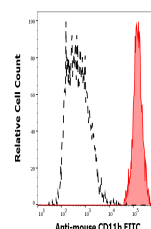


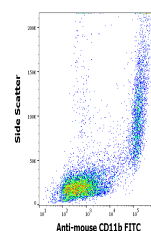
Product Datasheet

CD11b antibody (FITC) (orb44822)

| | |
|----------------------------|---|
| Description | Rat monoclonal antibody against CD11b conjugated to FITC |
| Reactivity | Human, Mouse, Primate, Rabbit |
| Conjugation | FITC |
| Tested Applications | FC |
| Immunogen | B10 mouse spleen cells enriched for T cells |
| Target | CD11b |
| Preservatives | Phosphate buffered saline (PBS), pH 7.4, 15 mM sodium azide |
| Concentration | 0.5 mg/ml |
| Storage | Store at 2-8°C. Protect from prolonged exposure to light. Do not freeze. |
| Note | For research use only |
| Application notes | Flow cytometry: Recommended dilution: 1-3 µg/ml. |
| Isotype | Rat IgG2b |
| Clonality | Monoclonal |
| Purity | Purified antibody is conjugated with fluorescein isothiocyanate (FITC) under optimum conditions and unconjugated antibody and free fluorochrome are removed by size-exclusion chromatography. |
| Uniprot ID | G5E8F1 |
| Entrez | 16409 |
| Dilution Range | Flow cytometry: Recommended dilution: 1-3 µg/ml. |
| Expiration Date | 12 months from date of receipt. |



Separation of mouse CD11b positive myelo...



Flow cytometry surface staining pattern ...