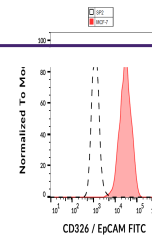

Product Datasheet

EpCAM antibody (FITC) (orb44757)

Description

Mouse Monoclonal antibody against EpCAM conjugated


 Flow
cytometry
analysis
(surface
stainin...

Reactivity	Human
Conjugation	FITC
Tested Applications	FC
Immunogen	Small cell lung carcinoma cell line H69.
Target	CD326
Preservatives	Stabilizing phosphate buffered saline (PBS), pH 7.4, 15 mM sodium azide
Storage	Store at 2-8°C. Protect from prolonged exposure to light. Do not freeze.
Note	For research use only
Application notes	Flow cytometry: The reagent is designed for analysis of human blood cells using 20 µl reagent / 100 µl of whole blood or 10 ⁶ cells in a suspension. The content of a vial (2 ml) is sufficient for 100 tests.
Isotype	Mouse IgG1
Clonality	Monoclonal
Purity	Purified antibody is conjugated with fluorescein isothiocyanate (FITC) under optimum conditions and unconjugated antibody and free fluorochrome are removed by size-exclusion chromatography.
Uniprot ID	P16422
Entrez	4072
Dilution Range	Flow cytometry: The reagent is designed for analysis of human blood cells using 20 µl reagent / 100 µl of whole blood or 10 ⁶ cells in a suspension. The content of a vial (2 ml) is sufficient for 100 tests.
Expiration Date	12 months from date of receipt.