

Product Datasheet

EpCAM antibody (orb44756)

Description

Mouse Monoclonal antibody againsts EpCAM

Reactivity

Human

Conjugation

Unconjugated

Tested Applications

FC, ICC, IHC-Fr, IHC-P, IP, WB

Immunogen

Small cell lung carcinoma cell line H69.

Target

CD326

Preservatives

Phosphate buffered saline (PBS), pH 7.4, 15 mM sodium azide

Concentration

1 mg/ml

Storage

Store at 2-8°C. Do not freeze.

Note

For research use only

Application notes

Immunohistochemistry (paraffin sections): Recommended dilution: 5-10 µg/ml; positive control: colon epithelium, antigen retrieval: heat (sodium citrate) + trypsin. Immunocytochemistry: Recommended dilution: 4 µg/ml. Western blotting: Recommended dilution: 1-4 µg/ml. Flow cytometry: Recommended dilution: 1-3 µg/ml. Immunoprecipitation: Recommended dilution: 1-2 µg / 100-500 µg of protein in 1 ml lysate.

Isotype

Mouse IgG1

Clonality

Monoclonal

Purity

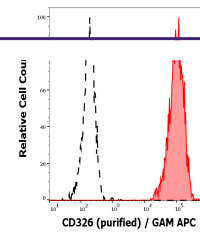
Purified by protein-A affinity chromatography.

Uniprot ID
[P16422](#)
Entrez
[4072](#)
Dilution Range

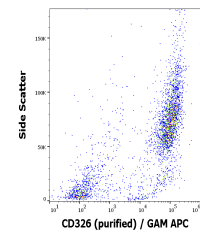
Immunohistochemistry (paraffin sections): Recommended dilution: 5-10 µg/ml; positive control: colon epithelium, antigen retrieval: heat (sodium citrate) + trypsin. Immunocytochemistry: Recommended dilution: 4 µg/ml. Western blotting: Recommended dilution: 1-4 µg/ml, non-reducing conditions. Flow cytometry: Recommended dilution: 1-3 µg/ml. Immunoprecipitation: Recommended dilution: 1-2 µg / 100-500 µg of protein in 1 ml lysate.

Expiration Date

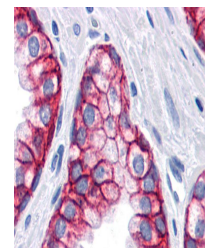
12 months from date of receipt.



Separation of MCF-7 cells (red-filled) f...



Flow cytometry surface staining pattern ...



Immunohistochemistry staining of human p...