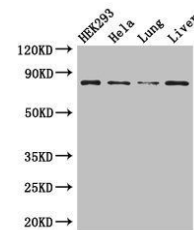


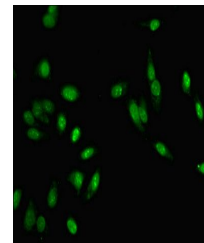
Product Datasheet

MLH1 antibody (orb44722)

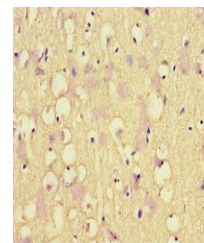
Description	MLH1 antibody
Species/Host	Rabbit
Reactivity	Human
Conjugation	Unconjugated
Tested Applications	ELISA, IF, IHC, WB
Immunogen	Recombinant Human DNA mismatch repair protein Mlh1 protein (350-519AA)
Target	MLH1
Preservatives	Preservative: 0.03% Proclin 300. Constituents: 50% Glycerol
Form/Appearance	Liquid
Storage	Maintain refrigerated at 2-8°C for up to 2 weeks. For long term storage store at -20°C in small aliquots to prevent freeze-thaw cycles.
Note	For research use only
Isotype	IgG
Clonality	Polyclonal
Uniprot ID	P40692
Dilution Range	WB:1:500-5000, IHC-P:1:100-500, IF:1:50-500
Expiration Date	12 months from date of receipt.



Western blot analysis of HEK293(lane 1),...



Immunofluorescence analysis of HeLa cell...



Immunohistochemical staining of human br...