

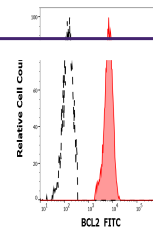
Product Datasheet

BCL2 antibody (FITC) (orb44689)

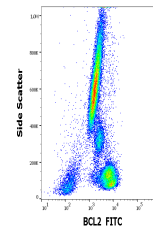
Description

Mouse monoclonal antibody against BCL2 conjugated to

Reactivity	Human
Conjugation	FITC
Tested Applications	FC
Immunogen	Synthetic peptide corresponding to the amino acids 41-54 of human Bcl2
Target	BCL2
Preservatives	Stabilizing phosphate buffered saline (PBS), pH 7.4, 15 mM sodium azide
Storage	Store at 2-8°C. Protect from prolonged exposure to light. Do not freeze.
Note	For research use only
Application notes	Flow cytometry: The reagent is designed for analysis of human blood cells using 4 µl reagent / 100 µl of whole blood or 10 ⁶ cells in a suspension. The content of a vial (0.4 ml) is sufficient for 100 tests. Intracellular staining.
Isotype	Mouse IgG1
Clonality	Monoclonal
Purity	Purified antibody is conjugated with fluorescein isothiocyanate (FITC) under optimum conditions and unconjugated antibody and free fluorochrome are removed by size-exclusion chromatography.
Uniprot ID	P10415
Entrez	596
Dilution Range	Flow cytometry: The reagent is designed for analysis of human blood cells using 4 µl reagent / 100 µl of whole blood or 10 ⁶ cells in a suspension. The content of a vial (0.4 ml) is sufficient for 100 tests. Intracellular staining.
Expiration Date	12 months from date of receipt.



Separation of human BCL2 positive lympho...



Flow cytometry intracellular staining pa...