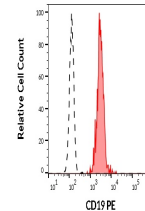


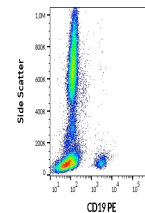
Product Datasheet

CD19 antibody (PE) (orb44662)

Description	Mouse Monoclonal to CD19.
Reactivity	Human
Conjugation	PE
Tested Applications	FC
Immunogen	Human CCL (chronic lymphocytic leukemia) cells
Target	CD19
Preservatives	Stabilizing phosphate buffered saline (PBS), pH 7.4, 15 mM sodium azide
Storage	Store at 2-8°C. Protect from prolonged exposure to light. Do not freeze.
Note	For research use only
Application notes	Flow cytometry: The reagent is designed for analysis of human blood cells using 20 µl reagent / 100 µl of whole blood or 106 cells in a suspension. The content of a vial (2 ml) is sufficient for 100 tests.
Isotype	Mouse IgG1 kappa
Clonality	Monoclonal
Purity	Purified antibody is conjugated with R-phycoerythrin (PE) under optimum conditions. Unconjugated antibody and free fluorochrome are removed by size-exclusion chromatography.
Uniprot ID	P15391
Entrez	930
Dilution Range	Flow cytometry: The reagent is designed for analysis of human blood cells using 20 µl reagent / 100 µl of whole blood or 106 cells in a suspension. The content of a vial (2 ml) is sufficient for 100 tests.
Expiration Date	12 months from date of receipt.



Separation of human CD19 positive lympho...



Flow cytometry surface staining pattern ...