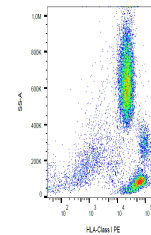


Product Datasheet

HLA-A antibody (PE) (orb44579)

Description	Mouse monoclonal antibody against HLA-A conjugated to PE
Reactivity	Bovine, Feline, Human, Primate
Conjugation	PE
Tested Applications	FC
Immunogen	Membrane of human tonsil cells
Target	HLA Class I
Preservatives	Stabilizing phosphate buffered saline (PBS), pH 7.4, 15 mM sodium azide
Concentration	0.1 mg/ml
Storage	Store at 2-8°C. Protect from prolonged exposure to light. Do not freeze.
Note	For research use only
Application notes	Flow cytometry: Recommended dilution: 1-5 µg/ml.
Isotype	Mouse IgG2a
Clonality	Monoclonal
Purity	Purified antibody is conjugated with R-phycoerythrin (PE) under optimum conditions. Unconjugated antibody and free fluorochrome are removed by size-exclusion chromatography.
Dilution Range	Flow cytometry: Recommended dilution: 1-5 µg/ml.
Expiration Date	12 months from date of receipt.



Flow cytometry analysis (surface stainin...