

---

## Product Datasheet

### Tubulin beta 3 antibody (orb44544)

**Description**

Mouse monoclonal antibody to Tubulin beta 3

**Reactivity**

Canine, Human, Mouse, Porcine, Rat

**Conjugation**

Unconjugated

**Tested Applications**

FC, ICC, IHC-P, WB

**Immunogen**

Peptide (C) 441-448 coupled to maleimide-activated keyhole limpet hemocyanin via cysteine added to the N-terminus of the neuron-specific peptide.

**Target**

betaIII-Tubulin

**Preservatives**

Phosphate buffered saline (PBS), pH 7.4, 15 mM sodium azide

**Concentration**

1 mg/ml

**Storage**

Store at 2-8°C. Do not freeze.

**Note**

For research use only

**Application notes**

Western blotting: Recommended dilution: 1-2 µg/ml; positive control: porcine brain lysate; negative control: HPB-ALL human peripheral blood leukemia cell line; reducing conditions. Immunohistochemistry (paraffin sections): Recommended dilution: 10 µg/ml, standard ABC technique (DAB+), pretreatment: 0.1% pepsin (trypsin) in 0.1 M HCl; incubation 30 min in RT; or high temperature citrate buffer antigen retrieval; positive tissue: neuronal tissue. Immunocytochemistry: Positive material: Neuro2a mouse neuroblastoma cell line. Flow cytometry: Recommended dilution: 1-4 µg/ml. Intracellular staining.

**Isotype**

Mouse IgG1

**Clonality**

Monoclonal

**Purity**

Purified by protein-A affinity chromatography.

**Uniprot ID**

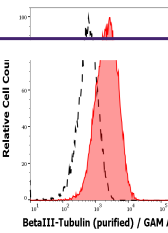
[Q13509](#)

**Entrez**

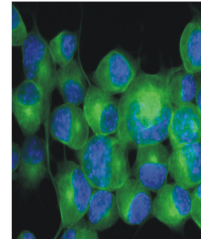
[10381](#)

**Dilution Range**

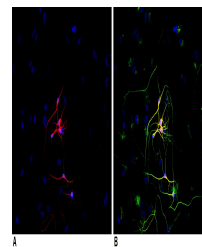
Western blotting: Recommended dilution: 1-2 µg/ml; positive control: porcine brain lysate; negative control: HPB-ALL human peripheral blood leukemia cell line; reducing conditions. Immunohistochemistry (paraffin sections): Recommended dilution: 10 µg/ml, standard ABC



Separation of MCF-7 cells stained using ...



Immunocytochemistry staining of Neuro2a ...



Immunocytochemistry staining of P-19 mou...