
Product Datasheet

alpha tubulin antibody (orb44543)

Description

Mouse Monoclonal to alpha tubulin.

Reactivity

Canine, Human, Mouse, Plant, Porcine, Rat

Conjugation

Unconjugated

Tested Applications

ELISA, ICC, IHC-P, IP, WB

Immunogen

Porcine brain microtubule protein MTP-1.

Target

alpha-Tubulin

Preservatives

Tris buffered saline (TBS), pH 8.0, 15 mM sodium azide

Concentration

1 mg/ml

Storage

Store at 2-8°C. Do not freeze.

Note

For research use only

Application notes

Western blotting: Recommended dilution: 1-2 µg/ml; positive control: HPB-ALL human peripheral blood leukemia cell line, reducing conditions.
 Immunohistochemistry (paraffin sections): Recommended dilution: 10 µg/ml.
 Immunoprecipitation: Reducing conditions.

Isotype

Mouse IgM

Clonality

Monoclonal

Purity

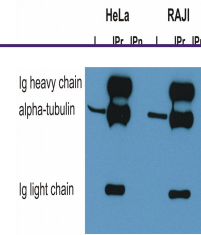
Purified by sequential steps of physicochemical fractionation (differential precipitation and solid-phase chromatography methods).

Uniprot ID
[Q71U36](#)
Entrez
[7277](#)
Dilution Range

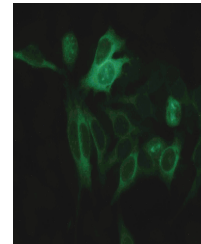
Immunohistochemistry (paraffin sections): Recommended dilution: 10 µg/ml.
 Immunoprecipitation: Reducing conditions.
 Western blotting: Recommended dilution: 1-2 µg/ml. This antibody can be used for Western blotting, but its alternative TU-02 (11-447-C100) gives better signal in this application.

Expiration Date

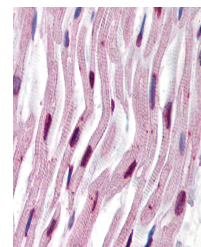
12 months from date of receipt.



Immunoprecipitation of alpha-tubulin fro...



Immunocytochemistry staining of alpha-tu...



Immunohistochemistry staining of human h...