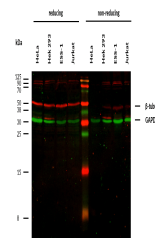


Product Datasheet

beta tubulin antibody (orb44542)

Description	Mouse Monoclonal to beta tubulin.
Reactivity	Human, Mouse, Plant, Porcine
Conjugation	Unconjugated
Tested Applications	ICC, IHC-Fr, WB
Immunogen	beta-tubulin from porcine brain
Target	beta-Tubulin
Preservatives	Tris buffered saline (TBS), pH 8.0, 15 mM sodium azide
Concentration	1 mg/ml
Storage	Store at 2-8°C. Do not freeze.
Note	For research use only
Application notes	Western blotting: Recommended dilution: 1-2 µg/ml.
Isotype	Mouse IgM
Clonality	Monoclonal
Purity	Purified by sequential steps of physicochemical fractionation (differential precipitation and solid-phase chromatography methods).
Uniprot ID	Q9H4B7
Entrez	81027
Dilution Range	Western blotting: Recommended dilution: 1-2 µg/ml.
Expiration Date	12 months from date of receipt.



Anti-beta-Tubulin Purified (TU-13) works...