

---

## Product Datasheet

### beta tubulin antibody (orb44535)

**Description**

Mouse Monoclonal to beta tubulin.

**Reactivity**

Fish, Gallus, Human, Mouse, Other, Paramecium, Plant, Porcine, Rat

**Conjugation**

Unconjugated

**Tested Applications**

ICC, IHC-P, WB

**Immunogen**

Beta-subunits of porcine brain tubulin.

**Target**

beta-Tubulin

**Preservatives**

Tris buffered saline (TBS), pH 8.0, 15 mM sodium azide

**Concentration**

1 mg/ml

**Storage**

Store at 2-8°C. Do not freeze.

**Note**

For research use only

**Application notes**

Immunocytochemistry: Recommended dilution: 2 µg/ml, fixed and permeabilized cells; positive control: 3T3 mouse embryonal fibroblast cell line.

Immunohistochemistry (paraffin sections): Recommended dilution: 5 µg/ml, positive tissue: heart.

Western blotting: Recommended dilution: 1-2 µg/ml.

**Isotype**

Mouse IgM

**Clonality**

Monoclonal

**Purity**

Purified by sequential steps of physicochemical fractionation (differential precipitation and solid-phase chromatography methods).

**Uniprot ID**
[Q9H4B7](#)
**Entrez**
[81027](#)
**Dilution Range**

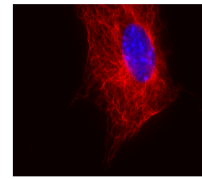
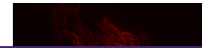
Immunocytochemistry: Recommended dilution: 2 µg/ml, fixed and permeabilized cells; positive control: 3T3 mouse embryonal fibroblast cell line.

Immunohistochemistry (paraffin sections): Recommended dilution: 5 µg/ml, positive tissue: heart.

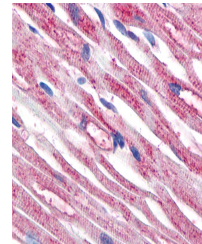
Western blotting: Recommended dilution: 1-2 µg/ml.

**Expiration Date**

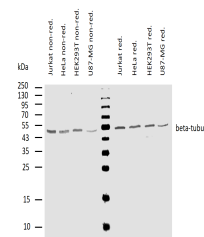
12 months from date of receipt.



Immunocytochemistry staining of 3T3 mouse...



Immunohistochemistry staining of human h...



Western blotting analysis of human beta-...