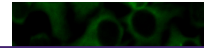

Product Datasheet

alpha tubulin antibody (FITC) (orb44531)

Description

Mouse Monoclonal to alpha tubulin.


Reactivity

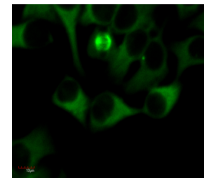
Aves, Human, Invertebrate, Mouse, Paramecium, Plant, Porcine, Yeast

Conjugation

FITC

Tested Applications

FC, ICC



Immunocytochemistry staining of alpha tu...

Immunogen

Fraction of tubulin purified from porcine brain by two cycles of polymerization - depolymerization.

Target

alpha-Tubulin

Preservatives

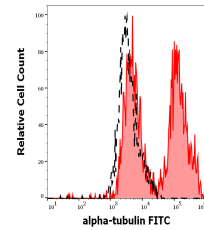
Phosphate buffered saline (PBS), pH 7.4, 15 mM sodium azide

Concentration

1 mg/ml

Storage

Store at 2-8°C. Protect from prolonged exposure to light. Do not freeze.



Separation of HeLa cells stained using a...

Note

For research use only

Application notes

Flow cytometry: Recommended dilution: 1-4 µg/ml. Intracellular staining.

Isotype

Mouse IgG1

Clonality

Monoclonal

Purity

Purified antibody is conjugated with fluorescein isothiocyanate (FITC) under optimum conditions and unconjugated antibody and free fluorochrome are removed by size-exclusion chromatography.

Uniprot ID

[Q71U36](#)

Entrez

[7277](#)

Dilution Range

Flow cytometry: Recommended dilution: 1-4 µg/ml. Intracellular staining.

Expiration Date

12 months from date of receipt.