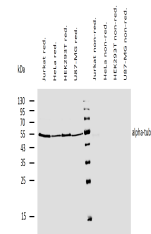


Product Datasheet

alpha tubulin antibody (Biotin) (orb44530)

Description	Mouse Monoclonal to alpha tubulin.
Reactivity	Aves, Human, Invertebrate, Mouse, Paramecium, Plant, Porcine, Yeast
Conjugation	Biotin
Tested Applications	FC, ICC, IHC-P, WB
Immunogen	Fraction of tubulin purified from porcine brain by two cycles of polymerization - depolymerization.
Target	alpha-Tubulin
Preservatives	Phosphate buffered saline (PBS), pH 7.4, 15 mM sodium azide
Concentration	1 mg/ml
Storage	Store at 2-8°C. Do not freeze.
Note	For research use only
Application notes	Western blotting: Recommended dilution: 1-2 µg/ml, reducing conditions.
Isotype	Mouse IgG1
Clonality	Monoclonal
Purity	Purified antibody is conjugated with biotin LC-NHS ester under optimum conditions and unconjugated antibody and free biotin are removed by size-exclusion chromatography.
Uniprot ID	Q71U36
Entrez	7277
Dilution Range	Western blotting: Recommended dilution: 1-2 µg/ml, reducing conditions.
Expiration Date	12 months from date of receipt.



Western blotting analysis of human alpha...