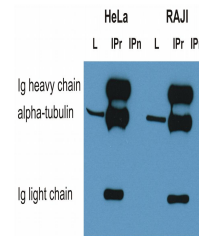


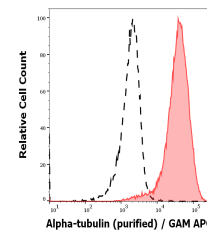
## Product Datasheet

### alpha tubulin antibody (orb44529)

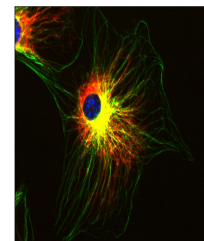
<b>Description</b>	Mouse Monoclonal to alpha tubulin.
<b>Reactivity</b>	Aves, Human, Invertebrate, Mouse, Paramecium, Plant, Porcine, Yeast
<b>Conjugation</b>	Unconjugated
<b>Tested Applications</b>	FC, ICC, IHC-P, IP, WB
<b>Immunogen</b>	Fraction of tubulin purified from porcine brain by two cycles of polymerization - depolymerization.
<b>Target</b>	alpha-Tubulin
<b>Preservatives</b>	Phosphate buffered saline (PBS), pH 7.4, 15 mM sodium azide
<b>Concentration</b>	1 mg/ml
<b>Storage</b>	Store at 2-8°C. Do not freeze.
<b>Note</b>	For research use only
<b>Application notes</b>	Flow cytometry: Recommended dilution: 1-4 µg/ml, intracellular staining. Western blotting: Recommended dilution: 1-2 µg/ml, reducing conditions.
<b>Isotype</b>	Mouse IgG1
<b>Clonality</b>	Monoclonal
<b>Purity</b>	Purified by protein-A affinity chromatography.
<b>Uniprot ID</b>	<a href="#">Q71U36</a>
<b>Entrez</b>	<a href="#">7277</a>
<b>Dilution Range</b>	Flow cytometry: Recommended dilution: 1-4 µg/ml, intracellular staining. Western blotting: Recommended dilution: 1-2 µg/ml, reducing conditions.
<b>Expiration Date</b>	12 months from date of receipt.



Immunoprecipitation of alpha-tubulin fro...



Separation of HeLa cells stained using a...



Immunocytochemistry staining of 3T3 mous...