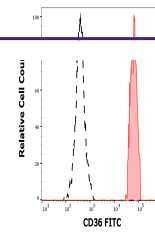

Product Datasheet

CD36 antibody (FITC) (orb44517)

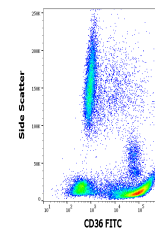
Description

Mouse monoclonal antibody against CD36 conjugated to

| | |
|----------------------------|---|
| Reactivity | Human |
| Conjugation | FITC |
| Tested Applications | FC |
| Immunogen | Platelets |
| Target | CD36 |
| Preservatives | Stabilizing phosphate buffered saline (PBS), pH 7.4, 15 mM sodium azide |
| Storage | Store at 2-8°C. Protect from prolonged exposure to light. Do not freeze. |
| Note | For research use only |
| Application notes | Flow cytometry: The reagent is designed for analysis of human blood cells using 20 µl reagent / 100 µl of whole blood or 10 ⁶ cells in a suspension. The content of a vial (2 ml) is sufficient for 100 tests. |
| Isotype | Mouse IgG1 |
| Clonality | Monoclonal |
| Purity | Purified antibody is conjugated with fluorescein isothiocyanate (FITC) under optimum conditions and unconjugated antibody and free fluorochrome are removed by size-exclusion chromatography. |
| Uniprot ID | P16671 |
| Entrez | 948 |
| Dilution Range | Flow cytometry: The reagent is designed for analysis of human blood cells using 20 µl reagent / 100 µl of whole blood or 10 ⁶ cells in a suspension. The content of a vial (2 ml) is sufficient for 100 tests. |
| Expiration Date | 12 months from date of receipt. |



Separation of human monocytes (red-fille...



Flow cytometry surface staining pattern ...