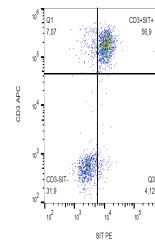


Product Datasheet

SIT antibody (PE) (orb44489)

| | |
|----------------------------|---|
| Description | Mouse Monoclonal to SIT. |
| Reactivity | Human |
| Conjugation | PE |
| Tested Applications | FC |
| Immunogen | Bacterially produced recombinant intracellular fragment of human SIT. |
| Target | SIT |
| Preservatives | Stabilizing phosphate buffered saline (PBS), pH 7.4, 15 mM sodium azide |
| Concentration | 0.1 mg/ml |
| Storage | Store at 2-8°C. Protect from prolonged exposure to light. Do not freeze. |
| Note | For research use only |
| Application notes | Flow cytometry: Recommended dilution: 1-5 µg/ml. Intracellular staining. |
| Isotype | Mouse IgG1 |
| Clonality | Monoclonal |
| Purity | Purified antibody is conjugated with R-phycoerythrin (PE) under optimum conditions. Unconjugated antibody and free fluorochrome are removed by size-exclusion chromatography. |
| Uniprot ID | Q9Y3P8 |
| Entrez | 27240 |
| Dilution Range | Flow cytometry: Recommended dilution: 1-5 µg/ml. Intracellular staining. |
| Expiration Date | 12 months from date of receipt. |



Flow cytometry analysis (intracellular S...