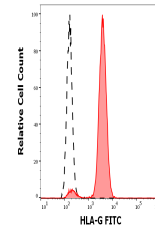


Product Datasheet

HLA-G antibody (FITC) (orb44437)

Description	Mouse Monoclonal to HLA-G.
Reactivity	Human
Conjugation	FITC
Tested Applications	FC
Immunogen	Recombinant human HLA-G refolded with beta2-microglobulin and peptide.
Target	HLA-G
Preservatives	Phosphate buffered saline (PBS), pH 7.4, 15 mM sodium azide
Concentration	1 mg/ml
Storage	Store at 2-8°C. Protect from prolonged exposure to light. Do not freeze.
Note	For research use only
Application notes	Flow cytometry: Recommended dilution: 1-5 µg/ml; positive control: JEG-3 human choriocarcinoma cell line.
Isotype	Mouse IgG1
Clonality	Monoclonal
Purity	Purified antibody is conjugated with fluorescein isothiocyanate (FITC) under optimum conditions and unconjugated antibody and free fluorochrome are removed by size-exclusion chromatography.
Uniprot ID	P17693
Entrez	3135
Dilution Range	Flow cytometry: Recommended dilution: 1-5 µg/ml; positive control: JEG-3 human choriocarcinoma cell line.
Expiration Date	12 months from date of receipt.



Separation of HLA-G transfected LCL cell...