

---

## Product Datasheet

### HLA-G antibody (FITC) (orb44429)

**Description**

Mouse Monoclonal to HLA-G.

**Reactivity**

Human

**Conjugation**

FITC

**Tested Applications**

FC

**Immunogen**

Recombinant human HLA-G refolded with beta2-microglobulin and peptide.

**Target**

HLA-G

**Preservatives**

Phosphate buffered saline (PBS), pH 7.4, 15 mM sodium azide

**Concentration**

1 mg/ml

**Storage**

Store at 2-8°C. Protect from prolonged exposure to light. Do not freeze.

**Note**

For research use only

**Application notes**

Flow cytometry: The antibody MEM-G/11 does not cross-block standard MEM-G/9 antibody. Recommended dilution: 1-3 µg/ml.

**Isotype**

Mouse IgG1

**Clonality**

Monoclonal

**Purity**

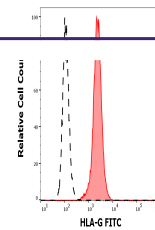
Purified antibody is conjugated with fluorescein isothiocyanate (FITC) under optimum conditions and unconjugated antibody and free fluorochrome are removed by size-exclusion chromatography.

**Uniprot ID**
[P17693](#)
**Entrez**
[3135](#)
**Dilution Range**

Flow cytometry: The antibody MEM-G/11 does not cross-block standard MEM-G/9 antibody. Recommended dilution: 1-3 µg/ml.

**Expiration Date**

12 months from date of receipt.



Separation of HLA-G transfected LCL cell...