

## Product Datasheet

### HLA-G antibody (orb44426)

**Description**

Mouse Monoclonal to HLA-G.

**Reactivity**

Human

**Conjugation**

Unconjugated

**Tested Applications**

IHC-Fr, IHC-P, WB

**Immunogen**

Denatured bacterially expressed recombinant human HLA-G heavy chain.

**Target**

HLA-G

**Preservatives**

Phosphate buffered saline (PBS), pH 7.4, 15 mM sodium azide

**Concentration**

1 mg/ml

**Storage**

Store at 2-8°C. Do not freeze.

**Note**

For research use only

**Application notes**

Immunohistochemistry (paraffin sections):  
 Recommended dilution: 1:60 to 1:100, incubation: 1 h at RT; positive tissue: human placenta - extravillous cytotrophoblast, heat retrieval in 0.01M citrate buffer (4x2 min. in microwave oven).

**Isotype**

Mouse IgG1

**Clonality**

Monoclonal

**Purity**

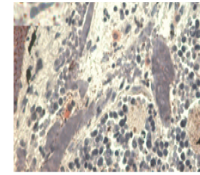
Purified by protein-A affinity chromatography.

**Uniprot ID**
[P17693](#)
**Entrez**
[3135](#)
**Dilution Range**

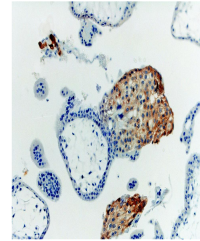
Immunohistochemistry (paraffin sections):  
 Recommended dilution: 1:60 to 1:100, incubation: 1 h at RT; positive tissue: human placenta - extravillous cytotrophoblast, heat retrieval in 0.01M citrate buffer (4x2 min. in microwave oven).  
 Western blotting:  
 Recommended dilution 1-2 µg/ml.

**Expiration Date**

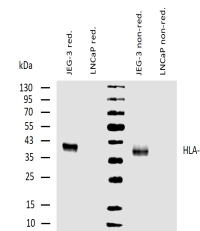
12 months from date of receipt.



Immunohistochemistry staining with anti-...



Immunohistochemistry staining with anti-...



Western blotting analysis of human HLA-G...