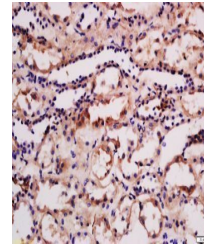


Product Datasheet

PRKD3 (phospho-Ser910) antibody (orb4440)

Description	PRKD3 (phospho-Ser910) antibody
Species/Host	Rabbit
Reactivity	Rat
Conjugation	Unconjugated
Tested Applications	ELISA, IF, IHC-Fr, IHC-P, WB
Immunogen	KLH conjugated Synthesised phosphopeptide derived from human PRKD3 around the phosphorylation site of Ser41 (RL(p-S)NG)
Target	phospho-PRKD3 (Ser41)
Preservatives	0.01M TBS(pH7.4) with 1% rAlbumin, 0.03% Proclin300 and 50% Glycerol.
Form/Appearance	Liquid
Concentration	1mg/ml
Storage	Shipped at 4°C. Store at -20 °C for one year. Avoid repeated freeze/thaw cycles.
Note	For research use only
Isotype	IgG
Clonality	Polyclonal
MW	100 kDa
Uniprot ID	O94806
Expiration Date	12 months from date of receipt.



Immunohistochemical staining of human ki...