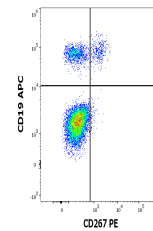


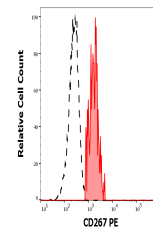
Product Datasheet

CD267 antibody (PE) (orb443263)

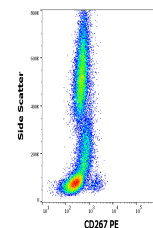
| | |
|----------------------------|---|
| Description | Rat monoclonal antibody against CD267 conjugated to PE |
| Reactivity | Human |
| Conjugation | PE |
| Tested Applications | FC |
| Immunogen | CD267-transfected RBL cells |
| Target | CD267 |
| Preservatives | Stabilizing phosphate buffered saline (PBS), pH 7.4, 15 mM sodium azide |
| Storage | Store at 2-8°C. Protect from prolonged exposure to light. Do not freeze. |
| Note | For research use only |
| Application notes | Flow cytometry: The reagent is designed for analysis of human blood cells using 10 µl reagent / 100 µl of whole blood or 106 cells in a suspension. The content of a vial (1 ml) is sufficient for 100 tests. |
| Isotype | Rat IgG2a kappa |
| Clonality | Monoclonal |
| Purity | Purified antibody is conjugated with R-phycoerythrin (PE) under optimum conditions. Unconjugated antibody and free fluorochrome are removed by size-exclusion chromatography. |
| Uniprot ID | O14836 |
| Entrez | 23495 |
| Dilution Range | Flow cytometry: The reagent is designed for analysis of human blood cells using 10 µl reagent / 100 µl of whole blood or 106 cells in a suspension. The content of a vial (1 ml) is sufficient for 100 tests. |
| Expiration Date | 12 months from date of receipt. |



Flow cytometry multicolor surface staini...



Separation of human CD267 positive B cel...



Flow cytometry surface staining pattern ...