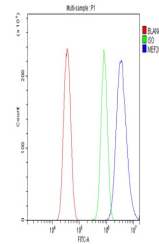


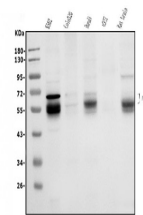
Product Datasheet

MEF2C Antibody (orb443200)

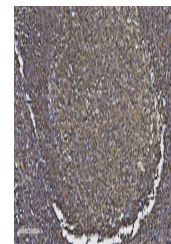
Description	MEF2C Antibody
Species/Host	Rabbit
Reactivity	Human, Mouse, Rat
Conjugation	Unconjugated
Tested Applications	FC, IHC, WB
Immunogen	A synthetic peptide corresponding to a sequence of human MEF2C (DREDHRNE FHSPIGLTRPSPDERESPSVKRMRLSEGWAT).
Form/Appearance	Lyophilized
Concentration	Adding 0.2 ml of distilled water will yield a concentration of 500 µg/ml.
Storage	Store at -20°C for one year from date of receipt. After reconstitution, at 4°C for one month. It can also be aliquotted and stored frozen at -20°C for six months. Avoid repeated freeze-thaw cycles.
Note	For research use only
Application notes	Add 0.2ml of distilled water will yield a concentration of 500ug/ml.
Isotype	Rabbit IgG
Clonality	Polyclonal
MW	50-65 kDa
Uniprot ID	Q06413
Expiration Date	12 months from date of receipt.



Flow Cytometry analysis of HELA cells us...



WB analysis of MEF2C using anti-MEF2C an...



IHC analysis of MEF2C using anti-MEF2C a...