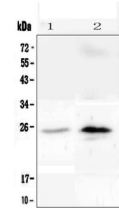


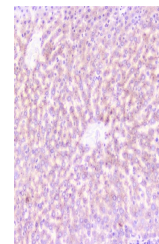
Product Datasheet

C Reactive Protein/CRP Antibody (orb443166)

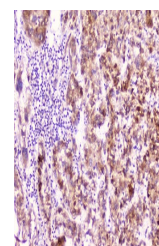
Description	C Reactive Protein/CRP Antibody
Species/Host	Rabbit
Reactivity	Human
Conjugation	Unconjugated
Tested Applications	IHC, WB
Immunogen	A synthetic peptide corresponding to a sequence of human C Reactive Protein (QTDMSRKAFVFPKESDTSYVSLKAPLTKPLKA).
Form/Appearance	Lyophilized
Concentration	Adding 0.2 ml of distilled water will yield a concentration of 500 µg/ml.
Storage	Store at -20°C for one year from date of receipt. After reconstitution, at 4°C for one month. It can also be aliquotted and stored frozen at -20°C for six months. Avoid repeated freeze-thaw cycles.
Note	For research use only
Application notes	Add 0.2ml of distilled water will yield a concentration of 500ug/ml.
Isotype	Rabbit IgG
Clonality	Polyclonal
MW	25 kDa
Uniprot ID	P02741
Expiration Date	12 months from date of receipt.



WB analysis of C Reactive Protein using ...



IHC analysis of C Reactive Protein using...



IHC analysis of C Reactive Protein using...