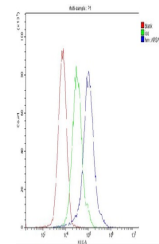


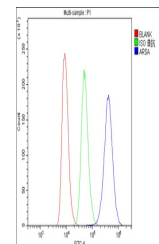
Product Datasheet

ARSA Antibody (monoclonal, 4C10) (orb443142)

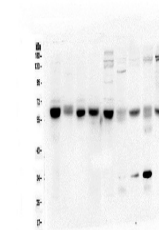
Description	ARSA Antibody (monoclonal, 4C10)
Species/Host	Mouse
Reactivity	Human, Mouse, Rat
Conjugation	Unconjugated
Tested Applications	FC, IHC, WB
Immunogen	A synthetic peptide corresponding to a sequence at the C-terminus of human ARSA (454-482aa QALKQLLLKAQLDAAVTFGPSQVARGED), different from the related mouse sequence by six amino acids.
Form/Appearance	Lyophilized
Concentration	Adding 0.2 ml of distilled water will yield a concentration of 500 µg/ml.
Storage	Store at -20°C for one year from date of receipt. After reconstitution, at 4°C for one month. It can also be aliquotted and stored frozen at -20°C for six months. Avoid repeated freeze-thaw cycles.
Note	For research use only
Application notes	Add 0.2ml of distilled water will yield a concentration of 500ug/ml.
Isotype	Mouse IgG2a
Clonality	Monoclonal
MW	54 kDa
Uniprot ID	P15289
Expiration Date	12 months from date of receipt.



Flow Cytometry analysis of ANA-1 cells u...



Flow Cytometry analysis of Raji cells us...



WB analysis of ARSA using anti-ARSA anti...