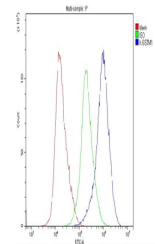


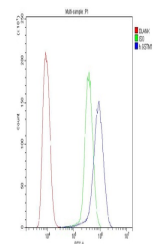
Product Datasheet

GSTM1 Antibody (monoclonal, 11F2) (orb443141)

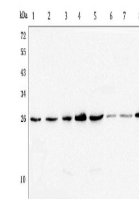
Description	GSTM1 Antibody (monoclonal, 11F2)
Species/Host	Mouse
Reactivity	Human, Mouse, Rat
Conjugation	Unconjugated
Tested Applications	FC, ICC, IHC, WB
Immunogen	A synthetic peptide corresponding to a sequence of human GSTM1 (EEEKIRVDIL ENQTMDNMQQLGMICYNPEFEKLK).
Form/Appearance	Lyophilized
Concentration	Adding 0.2 ml of distilled water will yield a concentration of 500 µg/ml.
Storage	Store at -20°C for one year from date of receipt. After reconstitution, at 4°C for one month. It can also be aliquotted and stored frozen at -20°C for six months. Avoid repeated freeze-thaw cycles.
Note	For research use only
Application notes	Add 0.2ml of distilled water will yield a concentration of 500ug/ml.
Isotype	Mouse IgG1
Clonality	Monoclonal
MW	26 kDa
Uniprot ID	P09488
Expiration Date	12 months from date of receipt.



Flow Cytometry analysis of HELA cells us...



Flow Cytometry analysis of U20S cells us...



WB analysis of GSTM1 using anti-GSTM1 an...