

---

## Product Datasheet

### Cytochrome C CYCS Antibody (monoclonal, 15F10) (orb443140)

**Description**

Cytochrome C CYCS Antibody (monoclonal,


**Species/Host**

Mouse

**Reactivity**

Human, Mouse, Rat

**Conjugation**

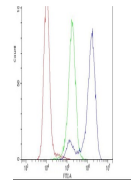
Unconjugated

**Tested Applications**

FC, ICC, IF, IHC, WB

**Immunogen**

E.coli-derived human Cytochrome C recombinant protein (Position: G2-E105). Human Cytochrome C shares 91% amino acid (aa) sequence identity with both mouse and rat Cytochrome C.



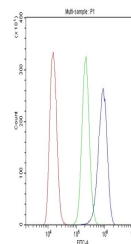
Flow Cytometry analysis of K562 cells us...

**Form/Appearance**

Lyophilized

**Concentration**

Adding 0.2 ml of distilled water will yield a concentration of 500 µg/ml.



Flow Cytometry analysis of A431 cells us...

**Storage**

Store at -20°C for one year from date of receipt. After reconstitution, at 4°C for one month. It can also be aliquotted and stored frozen at -20°C for six months. Avoid repeated freeze-thaw cycles.

**Note**

For research use only

**Application notes**

Add 0.2ml of distilled water will yield a concentration of 500ug/ml.

**Isotype**

Mouse IgG1

**Clonality**

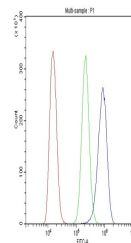
Monoclonal

**MW**

14 kDa

**Uniprot ID**
[P99999](#)
**Expiration Date**

12 months from date of receipt.



Flow Cytometry analysis of A431 cells us...