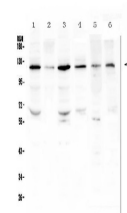


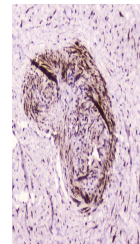
Product Datasheet

PDGF Receptor beta/PDGFRB Antibody (orb443124)

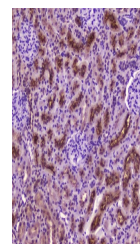
Description	PDGF Receptor beta/PDGFRB Antibody
Species/Host	Rabbit
Reactivity	Human, Mouse, Rat
Conjugation	Unconjugated
Tested Applications	ELISA, IHC, WB
Immunogen	E. coli-derived human PDGFRB recombinant protein (Position: E911-L992).
Form/Appearance	Lyophilized
Concentration	Adding 0.2 ml of distilled water will yield a concentration of 500 µg/ml.
Storage	Store at -20°C for one year from date of receipt. After reconstitution, at 4°C for one month. It can also be aliquotted and stored frozen at -20°C for six months. Avoid repeated freeze-thaw cycles.
Note	For research use only
Application notes	Add 0.2ml of distilled water will yield a concentration of 500ug/ml.
Isotype	Rabbit IgG
Clonality	Polyclonal
MW	120 kDa
Uniprot ID	P09619
Expiration Date	12 months from date of receipt.



WB analysis of PDGFRB using anti-PDGFRB ...



IHC analysis of PDGFRB using anti-PDGFRB...



IHC analysis of PDGFRB using anti-PDGFRB...