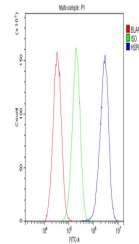


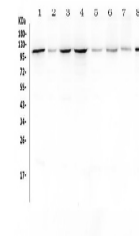
Product Datasheet

Hsp105/HSPH1 Antibody (orb443112)

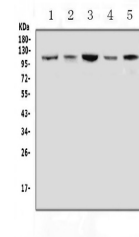
Description	Hsp105/HSPH1 Antibody
Species/Host	Rabbit
Reactivity	Human, Mouse, Rat
Conjugation	Unconjugated
Tested Applications	ELISA, FC, ICC, IF, IHC, IHC-Fr, WB
Immunogen	E. coli-derived human Hsp105 recombinant protein (Position: Y653-D858).
Form/Appearance	Lyophilized
Concentration	Adding 0.2 ml of distilled water will yield a concentration of 500 µg/ml.
Storage	Store at -20°C for one year from date of receipt. After reconstitution, at 4°C for one month. It can also be aliquotted and stored frozen at -20°C for six months. Avoid repeated freeze-thaw cycles.
Note	For research use only
Application notes	Add 0.2ml of distilled water will yield a concentration of 500ug/ml.
Isotype	Rabbit IgG
Clonality	Polyclonal
MW	105 kDa
Uniprot ID	Q92598
Expiration Date	12 months from date of receipt.



Flow Cytometry analysis of HepG2 cells U...



WB analysis of Hsp105 using anti-Hsp105 ...



WB analysis of Hsp105 using anti-Hsp105 ...