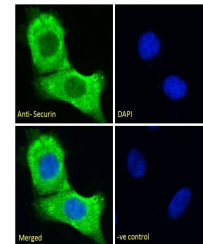


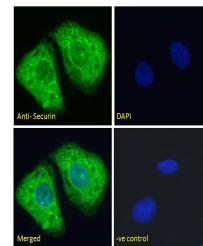
Product Datasheet

PTTG1 antibody (orb443077)

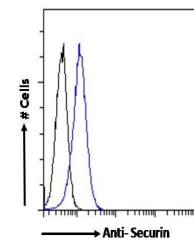
Description	Goat polyclonal antibody to PTTG1
Species/Host	Goat
Reactivity	Canine, Human, Mouse
Conjugation	Unconjugated
Tested Applications	ELISA, FC, IF, IHC
Target	Pituitary tumor-transforming 1 / Securin
Preservatives	Supplied at 0.5 mg/ml in Tris saline, 0.02% sodium azide, pH 7.3 with 0.5% bovine serum albumin. Aliquot and store at -20°C. Minimize freezing and thawing.
Storage	Aliquot and store at -20°C. Minimize freezing and thawing.
Note	For research use only
Application notes	IHC: Paraffin embedded Human Tonsil and Testis. Recommended concentration: 2.5µg/ml.. Notes: Immunofluorescence: Strong expression of the protein seen in the cytoplasm of HeLa and U2OS cells. Recommended concentration: 10µg/ml. Flow Cytometry: Flow cytometric analysis of Jurkat cells. Recommended concentratio
Protein Sequence	ILDEERELEKLFQ
Clonality	Polyclonal
MW	22.1
Entrez	9232
Dilution Range	ELISA: 1:16000, IHC-P: 2.5 µg/ml
Expiration Date	12 months from date of receipt.



Immunofluorescence analysis of HeLa cell...



Immunofluorescence analysis of HeLa cell...



Flow cytometric analysis of Jurkat cells...