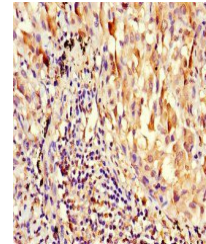


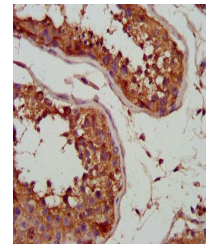
Product Datasheet

SLC25A5 antibody (orb44154)

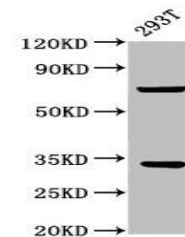
Description	SLC25A5 antibody
Species/Host	Rabbit
Reactivity	Human
Conjugation	Unconjugated
Tested Applications	ELISA, IHC, WB
Immunogen	Recombinant Human ADP/ATP translocase 2 protein (144-175AA)
Target	SLC25A5
Preservatives	Preservative: 0.03% Proclin 300. Constituents: 50% Glycerol
Form/Appearance	Liquid
Storage	Upon receipt, store at -20°C or -80°C. Avoid repeated freeze.
Note	For research use only
Isotype	IgG
Clonality	Polyclonal
Uniprot ID	P05141
Dilution Range	WB:1:500-5000, IHC-P:1:500-1000
Expiration Date	12 months from date of receipt.



Immunohistochemical staining of human liver tissue.



Immunohistochemical staining of human testis tissue.



Western blot analysis of 293T whole cell lysate.