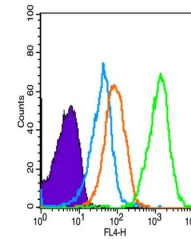


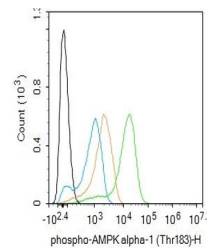
Product Datasheet

AMPK alpha 1 antibody (orb4412)

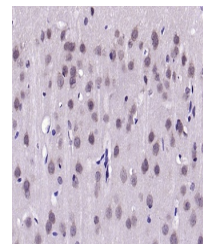
Description	AMPK alpha 1 antibody
Species/Host	Rabbit
Reactivity	Human, Mouse, Rat
Conjugation	Unconjugated
Tested Applications	FC, IHC-P
Immunogen	KLH conjugated Synthesised phosphopeptide derived from human AMPK alpha 1 around the phosphorylation site of Thr198(isoform 2)/Thr183(isoform 1) (LR(p-T)SC)
Target	phospho-AMPK alpha-1 (Thr183)
Preservatives	0.01M TBS(pH7.4) with 1% rAlbumin, 0.03% Proclin300 and 50% Glycerol.
Form/Appearance	Liquid
Concentration	1mg/ml
Storage	Maintain refrigerated at 2-8°C for up to 2 weeks. For long term storage store at -20°C in small aliquots to prevent freeze-thaw cycles.
Note	For research use only
Isotype	IgG
Clonality	Polyclonal
MW	64 kDa
Uniprot ID	Q13131
Dilution Range	IHC-P=1:100-500, Flow-Cyt=1ug/test, WB=1:500-2000, IHC-F=1:100-500, IF=1:100-500, ELISA=1:5000-10000
Expiration Date	12 months from date of receipt.



Flow cytometry of Mouse spleen(Black).Pr...



Flow cytometry of U937.Primary Antibody ...



IHC-P analysis of rat brain using phospho...