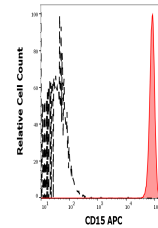


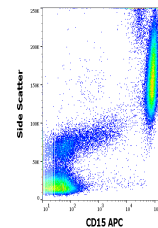
## Product Datasheet

### CD15 antibody (orb44112)

<b>Description</b>	Mouse Monoclonal to CD15.
<b>Reactivity</b>	Human
<b>Conjugation</b>	APC
<b>Tested Applications</b>	FC
<b>Immunogen</b>	Human granulocytes
<b>Target</b>	CD15
<b>Preservatives</b>	Stabilizing Tris buffered saline (TBS), pH 8.0, 15 mM sodium azide
<b>Storage</b>	Store at 2-8°C. Protect from prolonged exposure to light. Do not freeze.
<b>Note</b>	For research use only
<b>Application notes</b>	Flow cytometry: The reagent is designed for analysis of human blood cells using 10 µl reagent / 100 µl of whole blood or 10 <sup>6</sup> cells in a suspension. The content of a vial (1 ml) is sufficient for 100 tests.
<b>Isotype</b>	Mouse IgM
<b>Clonality</b>	Monoclonal
<b>Purity</b>	Purified antibody is conjugated with activated allophycocyanin (APC) under optimum conditions and unconjugated antibody and free fluorochrome are removed by size-exclusion chromatography.
<b>Dilution Range</b>	Flow cytometry: The reagent is designed for analysis of human blood cells using 10 µl reagent / 100 µl of whole blood or 10 <sup>6</sup> cells in a suspension. The content of a vial (1 ml) is sufficient for 100 tests.
<b>Expiration Date</b>	12 months from date of receipt.



Separation of human neutrophil granulocytes...



Flow cytometry surface staining pattern ...