

Product Datasheet

Anti-Hu CD16 FITC (orb44104)

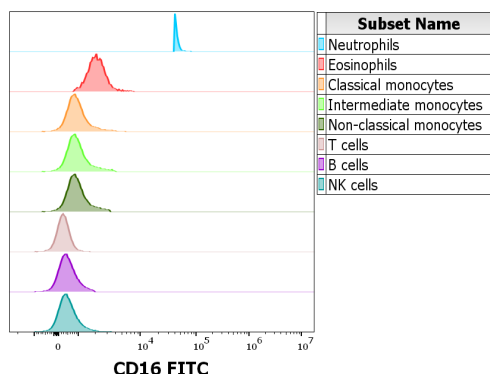
Description	Mouse Monoclonal to CD16.
Reactivity	Human
Conjugation	FITC
Tested Applications	FC
Immunogen	Human granulocytes
Target	CD16
Preservatives	Stabilizing phosphate buffered saline (PBS), pH 7.4, 15 mM sodium azide
Storage	Store at 2-8°C. Protect from prolonged exposure to light. Do not freeze.
Note	For research use only
Application notes	Flow cytometry: The reagent is designed for analysis of human blood cells using 20 µl reagent / 100 µl of whole blood or 10 ⁶ cells in a suspension. The content of a vial (2 ml) is sufficient for 100 tests.
Isotype	Mouse IgG1
Clonality	Monoclonal
Clone Number	MEM-154
Antibody Type	Primary Antibody
Purity	Purified antibody is conjugated with fluorescein isothiocyanate (FITC) under optimum conditions and unconjugated antibody and free fluorochrome are removed by size-exclusion chromatography.
Expiration Date	12 months from date of receipt.

Biorbyt Ltd.

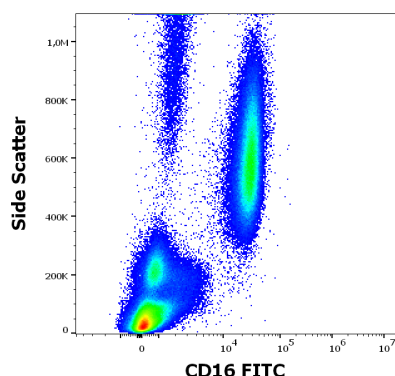
7 Signet Court, Swann's Road,
Cambridge, CB5 8LA, United Kingdom
Email: info@biorbyt.com, support@biorbyt.com
Phone: [+44 \(0\) 1223 859-353](tel:+441223859353) | Fax: [+1 \(415\) 651-8558](tel:+14156518558)

Biorbyt LLC.

68 TW Alexander Drive,
Durham, NC, 27713, United States
Email: info@biorbyt.com, support@biorbyt.com
Phone: [+1 \(415\) 906-5211](tel:+14159065211) | Fax: [+1 \(415\) 651-8558](tel:+14156518558)



Reactivity of Anti-human CD16 FITC antibody (clone MEM-154) on human peripheral leukocytes Analysis of the antibody staining profile was performed on blood leukocytes isolated from peripheral whole blood by bulk erythrocyte lysis using 10× diluted EXCELLYSE Live. Suspension of blood leukocytes (2×10^6 cells) was added to the mixture of CD16 FITC antibody (clone MEM-154, 6.7 µg/ml in stained blood sample), backbone antibody conjugates and Monocyte Blocking Buffer, vortexed and incubated for 20 min. Stained sample was fixed with 2 ml of 10× diluted EXCELLYSE Easy solution for 10 min. Finally, samples were centrifuged (670 g, 5 min.), supernatant removed and the cell pellet was resuspended in 200 µl of PBS for acquisition. Donor of tested blood sample had 158F polymorphism on CD16a.



Anti-human CD16 FITC antibody (clone MEM-154) works in flow cytometry application. Analysis of the antibody staining profile was performed on blood leukocytes isolated from peripheral whole blood by bulk erythrocyte lysis using 10× diluted EXCELLYSE Live. Mouse monoclonal anti-human CD16 FITC antibody (clone MEM-154) was used in concentration 6.7 µg/ml in stained blood sample (2×10^6 cells). Donor of tested blood sample had 158F polymorphism on CD16a.

Biorbyt Ltd.

7 Signet Court, Swann's Road,
Cambridge, CB5 8LA, United Kingdom
Email: info@biorbyt.com, support@biorbyt.com
Phone: [+44 \(0\) 1223 859-353](tel:+44201223859353) | Fax: [+1 \(415\) 651-8558](tel:+14156518558)

Biorbyt LLC.

68 TW Alexander Drive,
Durham, NC, 27713, United States
Email: info@biorbyt.com, support@biorbyt.com
Phone: [+1 \(415\) 906-5211](tel:+14159065211) | Fax: [+1 \(415\) 651-8558](tel:+14156518558)