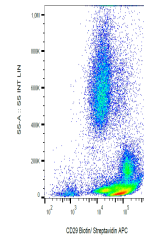


Product Datasheet

Integrin beta 1 antibody (Biotin) (orb44008)

Description	Mouse monoclonal antibody against Integrin beta 1 conjugated to Biotin
Reactivity	Canine, Human, Porcine
Conjugation	Biotin
Tested Applications	FC, IP, WB
Immunogen	Raji Burkitt's lymphoma cell line
Target	CD29
Preservatives	Phosphate buffered saline (PBS), pH 7.4, 15 mM sodium azide
Concentration	1 mg/ml
Storage	Store at 2-8°C. Do not freeze.
Note	For research use only
Application notes	Flow cytometry: Recommended dilution: 1-2 µg/ml.
Isotype	Mouse IgG1
Clonality	Monoclonal
Purity	Purified antibody is conjugated with biotin LC-NHS ester under optimum conditions and unconjugated antibody and free biotin are removed by size-exclusion chromatography.
Uniprot ID	P05556
Entrez	3688
Dilution Range	Flow cytometry: Recommended dilution: 1-2 µg/ml.
Expiration Date	12 months from date of receipt.



Flow cytometry analysis (surface stainin...