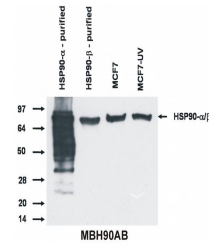


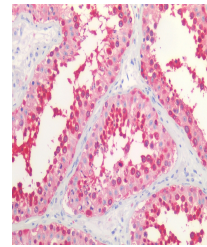
## Product Datasheet

### Hsp90 alpha/beta antibody (orb43977)

<b>Description</b>	Mouse Monoclonal to Hsp90 alpha/beta.
<b>Reactivity</b>	Bovine, Human, Mouse
<b>Conjugation</b>	Unconjugated
<b>Tested Applications</b>	IHC-P, WB
<b>Immunogen</b>	Peptide corresponding to the sequence EEVHHGEEVEEC within N-terminal part of human Hsp90.
<b>Target</b>	HSP90 alpha/beta
<b>Preservatives</b>	Stabilizing phosphate buffered saline (PBS), pH 7.4, 15 mM sodium azide
<b>Concentration</b>	1 mg/ml
<b>Storage</b>	Store at 2-8°C. Do not freeze.
<b>Note</b>	For research use only
<b>Application notes</b>	Western blotting: Recommended dilution: 1 µg/ml.
<b>Isotype</b>	Mouse IgG1
<b>Clonality</b>	Monoclonal
<b>Purity</b>	Purified by protein-A affinity chromatography.
<b>Dilution Range</b>	Western blotting: Recommended dilution: 1 µg/ml.
<b>Expiration Date</b>	12 months from date of receipt.



Western blotting analysis of Hsp90 alpha...



Immunohistochemistry staining of human t...