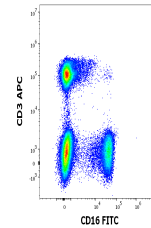


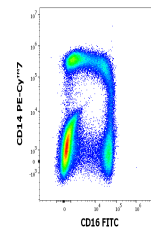
Product Datasheet

CD16 antibody (FITC) (orb43908)

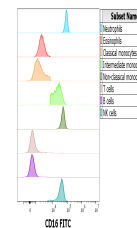
Description	Mouse Monoclonal to CD16.
Reactivity	Human, Primate
Conjugation	FITC
Tested Applications	FC
Immunogen	Normal human peripheral blood granulocytes
Target	CD16
Preservatives	Stabilizing phosphate buffered saline (PBS), pH 7.4, 15 mM sodium azide
Storage	Store at 2-8°C. Protect from prolonged exposure to light. Do not freeze.
Note	For research use only
Application notes	Flow cytometry: The reagent is designed for analysis of human blood cells using 20 µl reagent / 100 µl of whole blood or 106 cells in a suspension. The content of a vial (2 ml) is sufficient for 100 tests.
Isotype	Mouse IgG1
Clonality	Monoclonal
Purity	Purified antibody is conjugated with fluorescein isothiocyanate (FITC) under optimum conditions and unconjugated antibody and free fluorochrome are removed by size-exclusion chromatography.
Dilution Range	Flow cytometry: The reagent is designed for analysis of human blood cells using 20 µl reagent / 100 µl of whole blood or 106 cells in a suspension. The content of a vial (2 ml) is sufficient for 100 tests.
Expiration Date	12 months from date of receipt.



Staining pattern of Anti-human CD16 FITC...



Staining pattern of Anti-human CD16 FITC...



Reactivity of Anti-human CD16 FITC antib...