
Product Datasheet

LAT antibody (orb43896)

Description

Mouse Monoclonal to LAT.

Reactivity

Human

Conjugation

Unconjugated

Tested Applications

FC, IP, WB

Immunogen

Bacterially produced recombinant polypeptide corresponding to the entire cytoplasmic domain of human LAT.

Target

LAT

Preservatives

Phosphate buffered saline (PBS), pH 7.4, 15 mM sodium azide

Concentration

1 mg/ml

Storage

Store at 2-8°C. Do not freeze.

Note

For research use only

Application notes

Immunoprecipitation: Tyrosine-phosphorylated form of LAT is not optimally recognized. Flow cytometry: Intracellular staining. Tyrosine-phosphorylated form of LAT is not optimally recognized. Western blotting: Recommended dilution: 1-2 µg/ml.

Isotype

Mouse IgG1

Clonality

Monoclonal

Purity

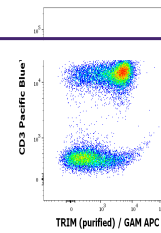
Purified by protein-A affinity chromatography.

Uniprot ID
[O43561](#)
Entrez
[27040](#)
Dilution Range

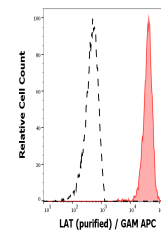
Immunoprecipitation: Tyrosine-phosphorylated form of LAT is not optimally recognized. Flow cytometry: Recommended dilution: 1-4 µg/ml, intracellular staining. Tyrosine-phosphorylated form of LAT is not optimally recognized. Western blotting: Recommended dilution: 1-2 µg/ml.

Expiration Date

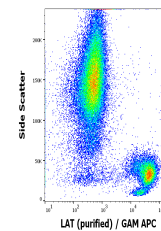
12 months from date of receipt.



Flow cytometry multicolor intracellular ...



Separation of human CD3 positive LAT pos...



Flow cytometry intracellular staining pa...