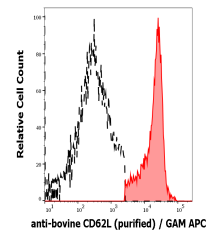


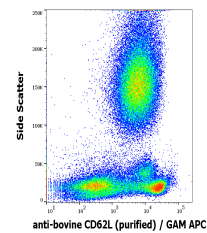
## Product Datasheet

### CD62L antibody (orb43892)

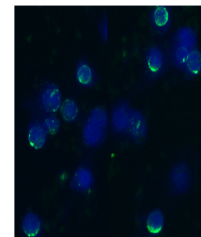
|                            |   |
|----------------------------|---|
| <b>Description</b>         | Mouse Monoclonal to CD62L.                                  |
| <b>Reactivity</b>          | Bovine, Human   |
| <b>Conjugation</b>         | Unconjugated  |
| <b>Tested Applications</b> | FC, ICC, IP   |
| <b>Immunogen</b>           | Bovine leukocytes.  |
| <b>Target</b>              | CD62L   |
| <b>Preservatives</b>       | Phosphate buffered saline (PBS), pH 7.4, 15 mM sodium azide |
| <b>Concentration</b>       | 1 mg/ml   |
| <b>Storage</b>             | Store at 2-8°C. Do not freeze.                              |
| <b>Note</b>                | For research use only                                       |
| <b>Application notes</b>   | Flow cytometry: Recommended dilution: 1-4 µg/ml.            |
| <b>Isotype</b>             | Mouse IgG1  |
| <b>Clonality</b>           | Monoclonal  |
| <b>Purity</b>              | Purified by protein-A affinity chromatography.              |
| <b>Uniprot ID</b>          | <a href="#">P98131</a>                                      |
| <b>Entrez</b>              | <a href="#">281485</a>                                      |
| <b>Dilution Range</b>      | Flow cytometry: Recommended dilution: 1-4 µg/ml.            |
| <b>Expiration Date</b>     | 12 months from date of receipt.                             |



Separation of bovine CD62L positive lymphocytes



Flow cytometry surface staining pattern



Immunocytochemistry staining of acetone-fixed cells