
Product Datasheet

SOX9 antibody (orb4387)

Description

SOX9 antibody

Species/Host

Rabbit

Reactivity

Human, Mouse, Porcine, Rat

Conjugation

Unconjugated

Tested Applications

ICC, IF, IHC-P, WB

Immunogen

KLH conjugated synthetic peptide derived from human SOX9. Please contact us for the exact immunogen sequence. The peptide is available as orb12916.

Target

SOX9

Form/Appearance

10 mM PBS, 0.02% sodium azide

Concentration

- 100 µg (in 200 µl): 0.5 mg/ml- 200 µg (in 400 µl): 0.5 mg/ml

Storage

Store at 4°C for up to two weeks. For long term storage, aliquot and store at -20°C, avoid freeze/thaw cycles.

Note

For research use only

Isotype

IgG

Clonality

Polyclonal

Purity

Polyclonal antibodies are purified by peptide affinity chromatography

MW

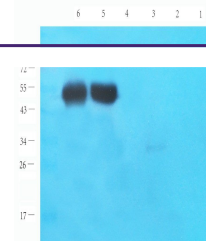
56 kDa

Uniprot ID
[Q04887](#), [P48436](#)
NCBI
[000337](#), [31](#), [000346](#), [11](#)
Entrez
[6662](#)
Dilution Range

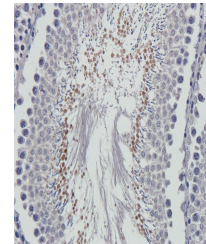
WB: 1:200-2000, IHC-P: 1:50-400, IF/ICC: 1:50-400 (based on 0.5 mg/ml)

Expiration Date

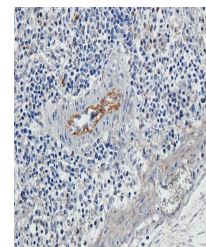
12 months from date of receipt.



WB analysis of mouse testis (lane 1), ra...



IHC-P image of rat testis tissue using s...



Immunohistochemical staining of paraffin...