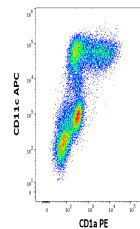


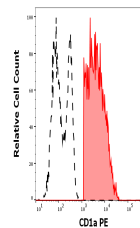
Product Datasheet

CD1a antibody (PE) (orb43816)

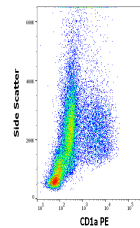
Description	Mouse Monoclonal to CD1a.
Reactivity	Human
Conjugation	PE
Tested Applications	FC
Immunogen	Human thymocytes
Target	CD1a
Preservatives	Stabilizing phosphate buffered saline (PBS), pH 7.4, 15 mM sodium azide
Storage	Store at 2-8°C. Protect from prolonged exposure to light. Do not freeze.
Note	For research use only
Application notes	Flow cytometry: The reagent is designed for analysis of human blood cells using 20 µl reagent / 100 µl of whole blood or 106 cells in a suspension. The content of a vial (2 ml) is sufficient for 100 tests.
Isotype	Mouse IgG1
Clonality	Monoclonal
Purity	Purified antibody is conjugated with R-phycoerythrin (PE) under optimum conditions. Unconjugated antibody and free fluorochrome are removed by size-exclusion chromatography.
Uniprot ID	P06126
Entrez	909
Dilution Range	Flow cytometry: The reagent is designed for analysis of human blood cells using 20 µl reagent / 100 µl of whole blood or 106 cells in a suspension. The content of a vial (2 ml) is sufficient for 100 tests.
Expiration Date	12 months from date of receipt.



Flow cytometry multicolor surface staini...



Separation of human CD1a positive CD11c ...



Flow cytometry surface staining pattern ...