

---

## Product Datasheet

### STIM1 antibody (orb43733)

**Description**

Mouse Monoclonal to STIM1.

**Reactivity**

Human, Mouse, Rat

**Conjugation**

Unconjugated

**Tested Applications**

ICC, IHC-P, IP, WB

**Immunogen**

Synthetized peptide (C-terminal cytoplasmic part of STIM1).

**Target**

STIM1

**Preservatives**

Phosphate buffered saline (PBS), pH 7.4, 15 mM sodium azide

**Concentration**

1 mg/ml

**Storage**

Store at 2-8°C. Do not freeze.

**Note**

For research use only

**Application notes**

Immunocytochemistry: Methanol-aceton fixation; positive control: HeLa human cervix carcinoma cell line. Immunohistochemistry (paraffin sections): Recommended dilution: 5 µg/ml. Western blotting: Recommended dilution: 1 µg/ml; positive control: RBL rat basophilic leukemia cell line; both reducing and non-reducing conditions.

**Isotype**

Mouse IgG1

**Clonality**

Monoclonal

**Purity**

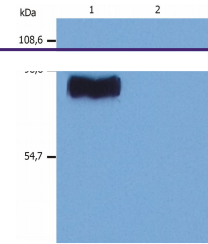
Purified by protein-A affinity chromatography.

**Uniprot ID**
[G0XQ39](#)
**Entrez**
[6786](#)
**Dilution Range**

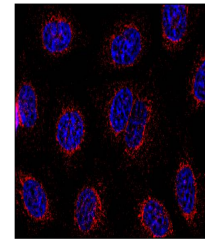
Immunocytochemistry: Methanol-aceton fixation; positive control: HeLa human cervix carcinoma cell line. Immunohistochemistry (paraffin sections): Recommended dilution: 5 µg/ml. Western blotting: Recommended dilution: 1 µg/ml; positive control: RBL rat basophilic leukemia cell line; both reducing and non-reducing conditions.

**Expiration Date**

12 months from date of receipt.



Western blotting analysis (non-reducing ...)



Immunocytochemistry staining of HeLa hum...